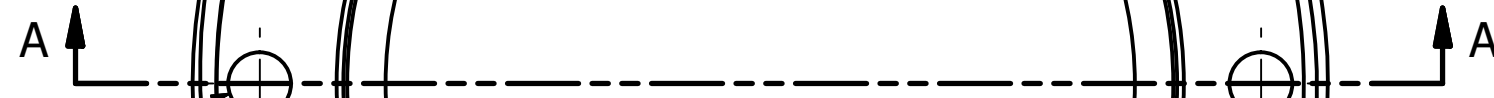


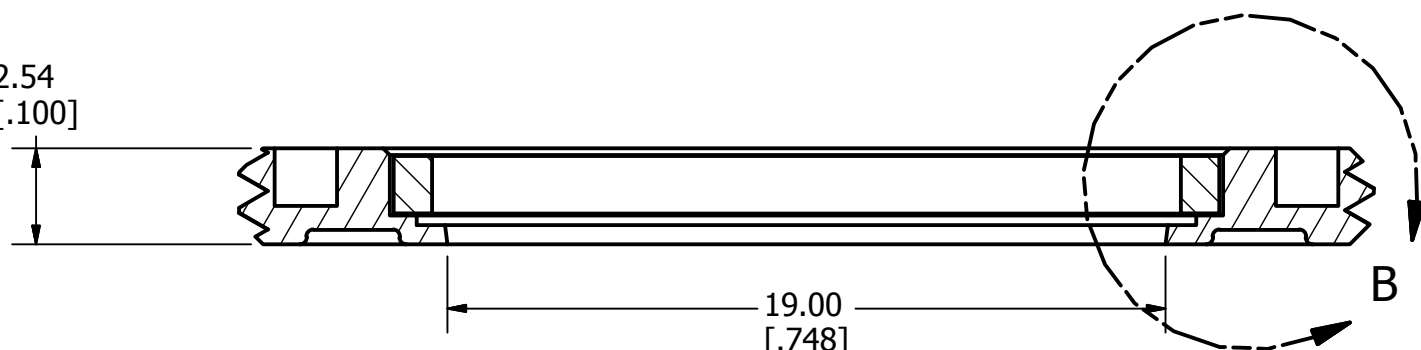
30mm x 1mm PITCH  
OUTSIDE DIAMETER

Ø1.7 2x 1.5∇  
[Ø.065]



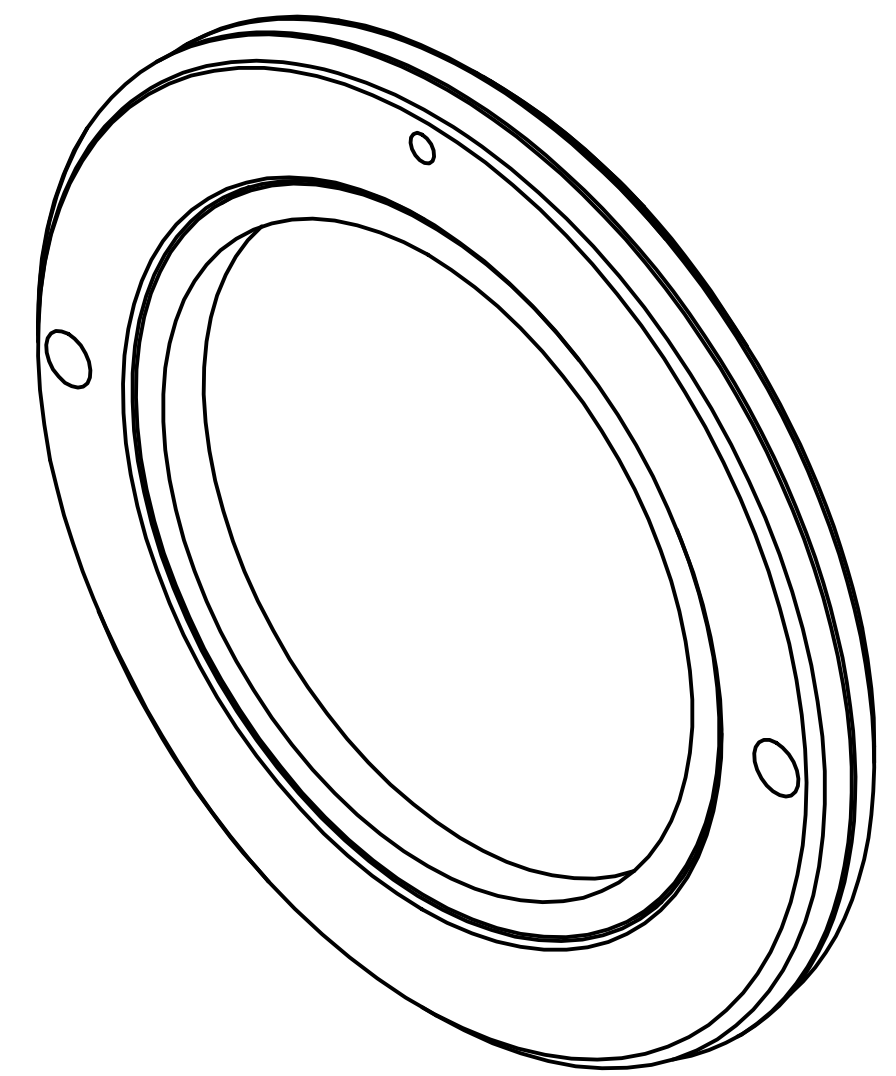
26.5  
[1.043]

2.54  
[.100]



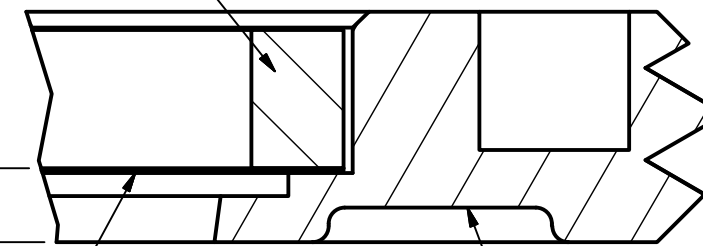
19.00  
[.748]  
CLEAR APERTURE

SECTION A-A



INNER RING

.81  
[.032]



DETAIL B

FILM SURFACE

-020 VITON OR EQUIVALENT  
O-RING SURFACE

Frame Options	
Frame	Aperture
VF119	*19.0mm (.748")

\* Standard      Custom Apertures Available Upon Request

DRAWN	JLDG	6/23/2015
CHECKED		
MATERIAL	304 SS	
UNLESS OTHERWISE SPECIFIED, DIMENSIONS ARE IN MILLIMETERS TOLERANCES ON:		
.X = ± .25		
DECIMALS: .XX = ± .13		
.XXX = ± .030		
ANGLES = ± .25°		



**Luxel Corporation**  
60 Saltspring Dr, PO Box 1879,  
Friday Harbor, WA 98250  
www.luxel.com  
360-378-4137 fax: 360-378-4266

19mm Window Insert for VAT Series 01.0 Valve

SIZE	DWG NO	REV
C	VF119S	
SCALE	SHEET 1 OF 1	

